

RFID TECHNOLOGY

HF- AND UHF-TAGS | READING SYSTEMS



LAUNDRY WORKFLOW

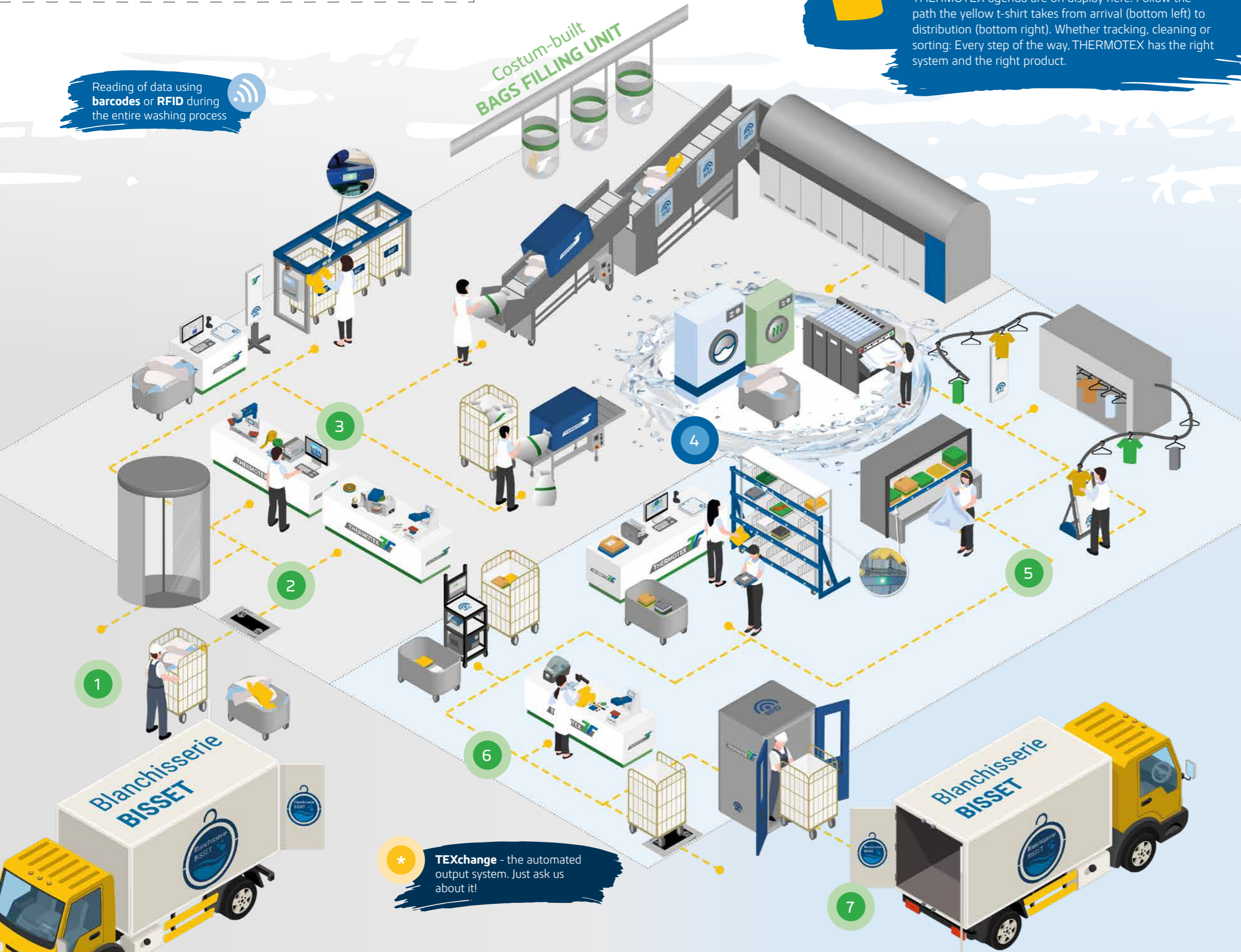


A SMALL SHIRT ON A BIG TRIP

The amount of care, technology and know-how on the THERMOTEX agenda are on display here: Follow the path the yellow t-shirt takes from arrival (bottom left) to distribution (bottom right). Whether tracking, cleaning or sorting: Every step of the way, THERMOTEX has the right system and the right product.

Reading of data using **barcodes** or **RFID** during the entire washing process

Costum-built **BAGS FILLING UNIT**



1 LAUNDRY ENTRANCE

- ☐ grid container, laundry trolley
- ☐ residents' laundry bags, container hoods (inner + outer), laundry bags, laundry nets
- ☐ **TEXchange entrance**, floor antenna

2 LABELLING

- ☐ heat seal machines
- ☐ thermal transfer printing systems
- ☐ labels, emblems
- ☐ **RFID technology: tags, reading systems**
- ☐ software: WinTexx 4, Saturn

3 SORTING IN ENTRY

- ☐ **RFID technology: HF/UHF tags**
- ☐ reading systems:
 - HF tunnel antenna
 - IN-SorTexx sorting aid (with LED display) with hand-held scanner, table antenna or panel antenna
 - ascending conveyor (HF or UHF)
- ☐ software: Saturn

4 WASHING PROCESS

- ☐ laundry trolleys
- ☐ washing, drying, industrial ironing

5 SORTING IN EXIT

- ☐ **RFID technology: HF/UHF tags**
- ☐ reading systems:
 - panel antenna: hanging or with stand
 - Paternoster lift system
 - OUT-SorTexx sorting aid (with LED display), optionally with billing system
 - **picking trolley (HF or UHF)**
- ☐ software: Saturn

6 PLACEMENT AND REPAIRS

- ☐ **RFID technology: HF/UHF tags, table antenna**, hand-held scanner
- ☐ thermal transfer printing systems and supplies
- ☐ heat seal machines and heat seal materials

7 LAUNDRY EXIT

- ☐ grid container, laundry trolley
- ☐ residents' laundry bags, container hoods (inside + outside), laundry bags, laundry nets
- ☐ **TEXchange exit**, floor antenna

* **TEXchange** - the automated output system. Just ask us about it!

RFID client project: Ascending conveyor for front loading washing machine

THE PROBLEM:

Our customer's quantity of mop covers in circulation was constantly increasing, which pushed them to their limit in terms of the required delivery quantities. Permanently re-purchasing was no longer an option!

THE SOLUTION:

Engineer Markus Bucher, technical director of the development department at THERMOTEX; explains: "Do you have problems with the loss of high-quality textile products? Then rely on RFID technology and make your laundry cycle transparent: We will be happy to help you. Our HF tunnel systems are available in different versions. Whether with a simple mat conveyor or as an ascending conveyor system with intelligent control technology, there are interesting possibilities for you to convert the existing process to your benefit."

IN USE:

In order to meet the exact requirements of this laundry, we focused on customised design. In this customer project, the tunnel reading system carries the mop covers to a front loader on a mobile basis. While the tunnel reading system carries the mop covers to the washing machine, the system detects the chipped laundry to check the quantity of delivered laundry.



We would be delighted to advise you on your RFID project!

Phone: +49 781 / 9616-0 | info@thermo-tex.de | www.thermo-tex.co.uk

RFID-TECHNOLOGIE: HF IN OVERVIEW



Tunnel antenna with conveyor belt

They are ideal for integration into already existing conveyor systems. The scanning of whole packages, bags or piles of laundry saves an enormous amount of time



Assignment made easy

The tags find their place in various textiles such as clothing, wiping mops or flat linen. Equipped like this, everything goes where it belongs



HF reading systems

The plug-in reading systems: plug in and start. These ensure, problem-free laundry sorting: The innovative reading system comprises a reader and an antenna and ensures smooth logging of laundry at the highest level



HF tags in three sizes

Small, medium or large: The HF tags are all very small (7, 11 and 16 mm), extremely robust and were specially developed for use in laundries



Accessories

Our accessories, e.g. attachments for tag or patch dispensers complete our range of HF technology products.



HF TAGS

WE CAN ALSO DO
NFC! FOR SMART
APPLICATIONS

TAGS: 7, 11, 16 MM IN ACCORDANCE WITH DIN ISO 15693

- for the fully automatic identification of textiles
- with a unique identification number („UID“)
- contactless reading
- reading: single, pile, bulk

- for patching (with patches) or for sewig in (woven pockets)
- suitable for industrial ironing
- resistant to industrial washing

HF I-TAGS
Ø 7MM

Art. no. 64336

| | |
|-----------------------------|--------------------|
| Areas of application | residents' laundry |
| Reading | single |
| Thickness | 2,0 mm |
| Reading distance | up to 16 cm |
| Laser engraving | no |

HF I-TAGS
Ø 11MM

Art. no. 62596

| | |
|-----------------------------|--|
| Areas of application | residents' laundry, workwear, flat linen |
| Reading | single, pile |
| Thickness | 2,4 mm |
| Reading distance | up to 28 cm |
| Laser engraving | yes |
| | customer-specific logo possible |

HF I-TAGS
Ø 16MM

Art. no. 64446

| | |
|-----------------------------|--|
| Areas of application | workwear, mops / dusters, flat linen, bathrobes, towels etc. |
| Reading | single, pile, bulk, tunnel |
| Thickness | 2,8 mm |
| Reading distance | up to 42 cm |
| Laser engraving | yes |
| | customer-specific logo possible |

FOR THE HIGHEST MECHANICAL
REQUIREMENTS

HF O-TAGS
Ø 16MM

Art. no. 65112

| | |
|-----------------------------|--|
| Areas of application | workwear, mops / dusters, flat linen, bathrobes, towels etc. |
| Reading | single, pile, bulk, tunnel |
| Thickness | 3,2 mm |
| Reading distance | up to 42 cm |
| Format | lenticular (rounded, soft edges) |
| Laser engraving | yes |
| | customer-specific logo possible |

HF READING SYSTEMS

HF READING SYSTEMS

Our innovative HF reading systems are cutting-edge and ensure optimal laundry sorting thanks to the corresponding tags. Entire bundles, bags or piles of laundry can be read in seconds, saving much time in the process!

DIRECT MARKING AFTER
THE READING PROCESS



HF SYSTEM TUNNEL ANTENNA WITH CONVEYOR BELT

- ideal for integration into existing conveyor systems
- reading of whole bundles, bags or piles of laundry
- great saving of time
- 100% reliability

The pictured system includes:

- tunnel antenna
- mat belt conveyor
- Long-Range reader
- antenna multiplexer
- control unit with frequency converter
- belt speed adjustable up to 13 m / min.

| | |
|---|---|
| Areas of application | workwear, mops / dusters, bathrobes, towels etc. |
| Reading | pile, recording contents of whole bags, piles of laundry and individual items |
| Tag dim. | 16 mm |
| Tunnel external dimensions (L x W x H) | 800 x 550 x 550 mm |
| External dimensions (L x W x H) | 1.904 x 710 x 1.361 mm |
| Tunnel opening (L x W x H) | 430 x 430 mm |
| Interfaces | Ethernet, optional: RS232, USB |

Art. no. 17858

HF READING SYSTEMS



- ☐ surface made of antistatic material
- ☐ especially for metal tables (shielded)
- ☐ integrated LED indicates operating states

HF SYSTEM MID-RANGE COMPACT PLUS

| | | | |
|--|---|------------|------------|
| Areas of application | table workstation for sorting laundry in the outgoing area or for intermediate inspection | | |
| Reading | single, limited piles | | |
| Tag dim. (in mm) and reading distance | 7 0-7 cm | 11 0-12 cm | 16 0-15 cm |
| Antenna dim. (LxWxH) | 310 x 260 x 30,5 mm | | |
| Decoder dim. | integrated into antenna | | |
| Interfaces | Ethernet, USB Virtuell COM + HID, RS-232 | | |

Art. no. 23320



- ☐ available as under-sink system

HF SYSTEM LONG-RANGE TABLE

| | | | |
|--|--|------------|------------|
| Areas of application | residents' laundry, workwear, mops/dusters, bathrobes, towels etc. | | |
| Reading | single, pile | | |
| Tag dim. (in mm) and reading distance | 7 0-16 cm | 11 0-28 cm | 16 0-42 cm |
| Antenna dim. (LxWxH) | 430 x 450 x 25 mm | | |
| Decoder dim. | 420 x 200 x 120 mm | | |
| Interfaces | RS232, Ethernet, USB | | |

The pictured system includes:

- ☐ HF industrial decoder
- ☐ HF antenna

Art. no. 21476



The pictured system includes:

- ☐ HF decoder
- ☐ HF antenna
- ☐ available as under-sink system

HF SYSTEM MID-RANGE TABLE

| | | | |
|--|--|------------|------------|
| Areas of application | residents' laundry, workwear, mops/dusters, bathrobes, towels etc. | | |
| Reading | single, pile | | |
| Tag dim. (in mm) and reading distance | 7 0-5 cm | 11 0-15 cm | 16 0-20 cm |
| Antenna dim. (LxWxH) | 300 x 250 x 12 mm | | |
| Decoder dim. | 170 x 105 x 45 mm | | |
| Interfaces | RS232, Ethernet, USB | | |

Art. no. 18533



- ☐ also available as a table system

HF SYSTEM LONG-RANGE LOOP

| | | | |
|--|--|------------|------------|
| Areas of application | residents' laundry, workwear, mops/dusters, bathrobes, towels etc. | | |
| Reading | single, pile | | |
| Tag dim. (in mm) and reading distance | 7 0-16 cm | 11 0-28 cm | 16 0-42 cm |
| Antenna dim. (LxWxH) | 430 x 450 x 23 mm | | |
| Decoder dim. | 420 x 200 x 120 mm | | |
| Interfaces | RS232, Ethernet, USB | | |

The pictured system includes:

- ☐ HF industrial decoder
- ☐ HF antenna

Art. no. 17274



- ☐ also available as a table system

HF SYSTEM MID-RANGE LOOP

| | | | |
|--|--|------------|------------|
| Areas of application | workwear, mops/dusters, bathrobes, towels etc. | | |
| Reading | single, pile | | |
| Tag dim. (in mm) and reading distance | 7 - | 11 0-13 cm | 16 0-28 cm |
| Antenna dim. (LxWxH) | 430 x 450 x 23 mm | | |
| Decoder dim. | 170 x 105 x 45 mm | | |
| Interfaces | RS232, Ethernet, USB | | |

The pictured system includes:

- ☐ HF decoder
- ☐ HF antenna

Art. no. 17027



- ☐ surface made of antistatic material
- ☐ especially for metal tables (shielded)
- ☐ integrated LED indicates operating states

HF/UHF SYSTEM MID-RANGE COMPACT

| | | | |
|--|---|------------|------------|
| Areas of application | table workstation for sorting laundry in the outgoing area or for intermediate inspection | | |
| Reading | single, limited pile | | |
| Tag dim. (in mm) and reading distance | 7 0-6 cm | 11 0-12 cm | 16 0-15 cm |
| Antenna dim. (LxWxH) | 310 x 260 x 30,5 mm | | |
| Decoder dim. | integrated into antenna | | |
| Interfaces | Ethernet, USB Virtuell COM + HID, RS-232 | | |

Art. No. 23127

HF READING SYSTEMS



Bluetooth base station
(#22078 or #23319)

HF HAND-HELD SCANNING SYSTEM TYPE 21

| | | | |
|--|--|----------|-----------|
| Areas of application | controlled reading of individual items or on hangers | | |
| Reading | single | | |
| Tag dim. (in mm) and reading distance | 7 contact reading | 11 0-5cm | 16 0-10cm |
| Interfaces | USB, Bluetooth | | |

- optional: Ethernet and RS232 possible in conjunction with a base station
- control info via display screen

Art. no. 19333

ALSO AVAILABLE WITH HOLDER

HF-SYSTEM LONG-RANGE-PANEL

| | |
|-----------------------------|---|
| Areas of application | sorting facilities, individual reading stations |
| Multi-tag | compatible |
| Dimensions (LxWxH) | 1,150 x 280 x 30mm |
| Interfaces | RS232, Ethernet, USB |

- for reading of hanging items in a conveyor system

The pictured system includes:

- HF industrial reader
- HF antenna

With flexible holder

Art. no. 17275

STAND FOR LONG-RANGE-PANEL

- for ironing stations and folding robots
- the pictured system includes either:
 - holder with 4 feet or
 - floor holder with adjustable angle

- Stand for panel Art. no. 19840
- Floor holder for Panel Art. no. 20145
- Holder for ironing station Art. no. 21221

RFID PICKING TROLLEY FOR HF AND UHF THE MOBILE AND STATIONARY SOLUTION



MORE INFO

The pictured system includes:

- Loop antenna
- industrial decoder
- socket strip; fourfold
- PC support
- 2 fixed and 2 steering wheels with brakes, Ø125mm rubberized

ACCESSORIES

ATTACHMENTS FOR TAGS - PATCHES, LABELS AND WOVEN TAG POCKETS

Patches allow the tags to be attached easily using a heat seal machine.



PATCHES

- patch standard quality P0703 (100% polyester), white

Other formats on request

LABELS

- self-adhesive labels
- Pre-fixing allows the optimum alignment of the tag under the label before heat-sealing

Other formats on request

| | |
|-----------------------------|---|
| Areas of application | within different steps of the process, mobile or stationary |
| Dim. (LxWxH) | 600 x 600 x 1,400mm |
| Interfaces | USB HID, USB Virtuell-Com, RS232, Ethernet |

CUSTOMISED OPTION ALSO POSSIBLE

ADVANTAGES OF THE PICKING TROLLEY

- mobility and flexibility
- robust construction with mounting option for notebooks or all-in-one touch screen systems
- integration of RFID reading systems in HF, UHF or as a combined solution
- configurable and customisable to customer requirements (customised construction)
- optional: power-independent operation is possible by way of integration of UPS equipment with ACD power rack 250V/60Ah-300W
- optional: a pre-configured, ventilation free All-In-One touch screen system

RFID HF picking trolley

Art. no. 18260

HF TECHNOLOGY: ACCESSORIES

ACCESSORIES

ATTACHMENTS FOR TAGS – PATCHES, LABELS AND WOVEN TAG POCKETS



WOVEN TAG POCKETS

| | |
|-------------------------|---|
| Variants | plain or with woven-in logo, available with or without tag already inserted |
| Tag | max. 16 mm |
| Material | polyester |
| Dimensions (WxH) | 24 x 40 mm (standard format) |

Other formats and variants on request Art. no. 62218

PATCH DISPENSER AND HAFTEX PATCHES

The patch dispenser keeps your tag patches always ready to hand. The self-adhesive patches permit highly efficient work.



| Haftex patches | Format | Art. no. |
|-----------------------|-------------------------|----------|
| 1,000 labels per roll | rectangular, 35 x 35 mm | 58034 |
| 1,000 labels per roll | round, Ø 50 mm | 58434 |

Patch dispenser Art. no. 15627

CONTAINER MARKING

| | |
|-------------------------|--------------------------|
| Printing type | thermal transfer |
| Type | HF, ISO 15693, ICode SLI |
| Material | PET white, plain |
| Adhesive | permanently adhesive |
| Packaging | on a roll |
| Dimensions (WxH) | 50 x 50 mm, 1 column |

for plastic transport containers

Other formats and variants on request Art. no. 63866



SUITABLE FOR CLEANING SLUICES

CUSTOM-BUILTS

CUSTOM-BUILTS

Custom-builts by THERMOTEX are tailored to the individual processes and requirements of the customer. They are ideal for integration into existing conveyor systems. Custom-builts according to your requirements.

ASCENDING CONVEYORS

- two systems in one: the ascending conveyor is a transportation belt for delivery to a loading system with the simultaneous logging of the laundry items
- the laundry item incl. tag is read by the antenna in the transport bag or separately when passing through and transferred to the next processing station
- the pictured system includes:
 - Mat belt conveyor with ergonomic hopper and sideguide
 - HF long-range reader
 - Switch cabinet with operating elements

INDIVIDUALLY TUNED TO CUSTOMER REQUIREMENTS!



ASCENDING CONVEYOR FOR FRONT LOADING WASHING MACHINE



MORE INFO

Engineer Markus Bucher, technical director of the development department at THERMOTEX; explains: "Do you have **problems with the loss** of high-quality textile products? Then rely on **RFID technology** and make your **laundry cycle** transparent: We will be happy to help you. Our **HF tunnel systems** are available in different versions. Whether with a simple **mat belt conveyor** or as an **ascending conveyor system** with intelligent control technology, there are interesting possibilities for you to convert the existing process to **your benefit**. In order to meet your exact requirements, we are also happy to implement special designs."

RFID client project: *Iron-on station*

THE PROBLEM:

The chipped laundry items should be detected quickly and accurately in the ironing-on process. This is the only way to ensure that the work process is carried out efficiently.

THE SOLUTION:

Our client now relies on the hanging UHF panel antenna in combination with the perfectly matched UHF tags. At the iron-on station, the antenna reads the chipped textiles and passes them on to the sorting system with a specific destination.

The antenna offers a high degree of flexibility in mounting and alignment in order to optimally adjust the application together with the client and his staff. The savings in time and costs are quickly noticed!

IN USE:

The UHF panel antenna can be attached to the existing iron-on modules according to the client's wishes. Then, thanks to the various models of antennas, the system adapts flexibly to each customer, and not the customer to the system.



We would be delighted to advise you on your RFID project!

Tel.: +49 781 / 9616-0 | info@thermo-tex.de | www.thermo-tex.co.uk

OPTIMAL LAUNDRY SORTING

CONTAINER AND BULK LOGGING

The innovative UHF reading systems from THERMOTEX comprise a perfect combination of reader and antenna. Together with the corresponding tags, they ensure optimal laundry logging and tracking. This way, they contribute to the optimisation of the processes, increase your savings in terms of costs and time, and thus improve the efficiency of your company. The systems can be integrated into already existing IT systems and are also available as customer-specific solutions. The system offers a significant advantage for bulk logging where a large quantity of chipped textiles can be identified simultaneously.

Tags for textiles



UHF tags

Due to their long range, the UHF tags are particularly suitable for container and bulk logging as well as for coverage of a room or defined area

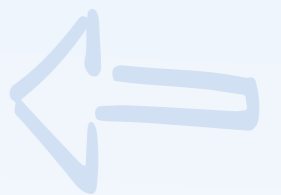


Tags for attachment to the containers



UHF reading systems

The innovative UHF reading systems from THERMOTEX are adjusted to technically and optimally meet the requirements of the various applications. Together with the corresponding tags, they ensure the identification of the textiles and optimal laundry sorting throughout the entire laundry cycle. **We allow you precise detection rates for your UHF applications!**



UHF TAG

EMBROIDERED TAGS

The tags are made of tried and tested materials and are suitable for heat sealing or sewing in. They are available in various sizes and variants and are suitable for standard or wet washing. THERMOTEX programs and manages the number ranges, thus providing the highest security for your laundry process.

F10 TAG



Dimensions: 58 x 18,5mm
Thickness: 0,5mm, < 2,5mm in chip area



OUR UHF EMBROIDERED TAG IS RESISTANT TO INDUSTRIAL WASHING PROCESSES AND INDUSTRIAL IRONER!

| | |
|-----------------------------|--|
| Areas of application | reading of workwear, flat textiles and accessory textiles e.g. in in-coming and out-going areas or during the inventory of cupboards/rooms |
| Reading | bulk reading, e.g. in grid container |
| Reading distance | up to 6m |
| Use with | UHF Box, Gate, Shelf, Fix Sehlf, hand-held readers, Universal, Compact |
| Application | sewing in / heat sealing |



F10 TAGS ON ROLLS

- ☐ all F10 variants are available on a roll
- ☐ particularly suitable for garment manufacturers
- ☐ allows the automatic merging of tag and flat laundry items, for example

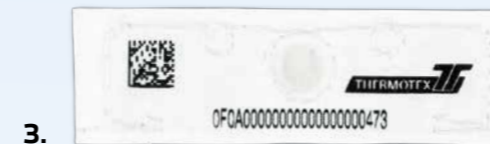
OVERVIEW OF F10 VARIANTS



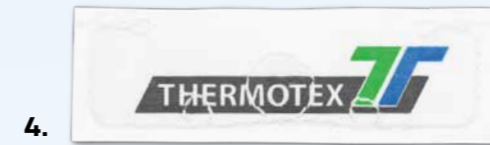
UNPRINTED
plain, without optical recognition
Art. no. 67631



WITH EPC NUMBER
EPC number permanently visually readable. Data matrix code readable with every smartphone
Art. no. 67582



WITH LOGO AND EPC NUMBER
EPC number permanently visually readable. Data matrix code readable with every smartphone. Customer-specific logo possible to identify the property
Art. no. 67966



WITH LOGO
with multi-coloured, customer-specific logo to identify the property
Art. no. 67632



WITH BARCODE
The barcode number can always be read optically and is coupled with the EPC number. Barcode readable with every smartphone
Art. no. 67967

UHF TAG

OUR UHF EMBROIDERED TAG IS RESISTANT TO INDUSTRIAL WASHING PROCESSES AND INDUSTRIAL IRONER!



F11 TAG

6.



Art. no. 68108

| | |
|-----------------------------|--|
| Dimensions | 70 x 11mm · thickness: 0,5 mm, 2,5mm in chip area |
| Areas of application | reading of workwear, flat textiles and contract textiles |
| Reading | bulk reading, e.g. in grid container |
| Reading distance | up to 6m |
| Use with | UHF Box, Gate, Shelf, hand-held readers, Universal, Table Plus |
| Application | for sewing into the seam of a textile item |

F12 TAG

7.

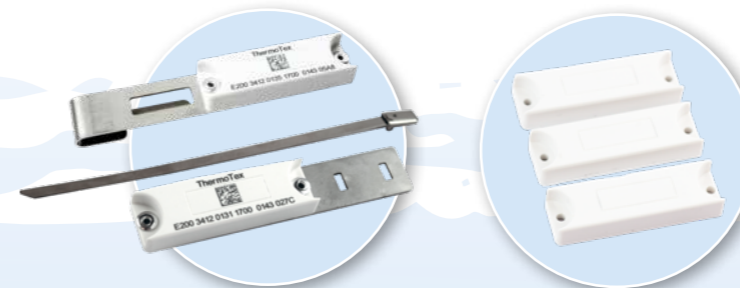


Art. no. 68163



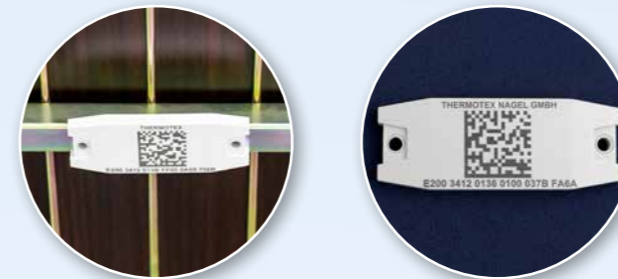
| | |
|-----------------------------|---|
| Dimensions | 36 x 11mm · thickness: 0,5 mm, 2,5mm in chip area |
| Areas of application | reading of residents' laundry |
| Reading | single, pile |
| Reading distance | up to 1m |
| Use with | Shelf, Fix Shelf, Hand-held reader, Compact |
| Application | for patching with an identification label, which can be customised with an individual name or logo. We recommend to use Fixtexx labels in the dimension 41x14,4mm or 53x19mm. |

UHF TAGS FOR THE MARKING OF TRANSPORT SYSTEMS



C2 with barcode and bracket

C2 blank



C3 on the underside of the grid trolley

C3 with laser inscription

UHF TAGS FOR MOUNTING

- robust, durable tag
- waterproof

UHF CONTAINER TAG C2

- dimensions (L x W x H): 52 x 16 x 8.5mm
- max. writing/reading distance: 2m
- for screwing on to containers

- C2 Art. no. 65690
- C2 with laser inscription and bracket Art. no. 67784
- C2 with laser inscription and bracket for cable tie mounting Art. no. 67809

UHF CONTAINER TAG C3

- dimensions (L x W x H): 95 x 35 x 8 ± 0,4 mm
- max. writing/reading distance: 5m
- mounting on metal by means of rivets, screws or industrial adhesive

- C3 Art. no. 68872

UHF SELF-ADHESIVE LABELS

- suitable for thermal transfer printing
- adhesive: permanently adhesive
- material: PET white, plain
- packaging: on rolls

Art. no. 66982



F10 with EPC number



F10 with logo and EPC number



F11 in towel

ACCESSORIES: WOVEN TAG POCKETS

- in different pocket sizes
- quality: taffeta
- tube woven
- cut in hot condition
- for F10 & F11 tags
- for sewing in

INDIVIDUAL WEAVING POSSIBLE



For F10 tag
Art. no. 67992



For F11 tag
Art. no. 69506

UHF READING SYSTEMS

UHF-SYSTEM LONG-RANGE UNIVERSAL AND INDUSTRY SOLUTION UNIVERSAL I

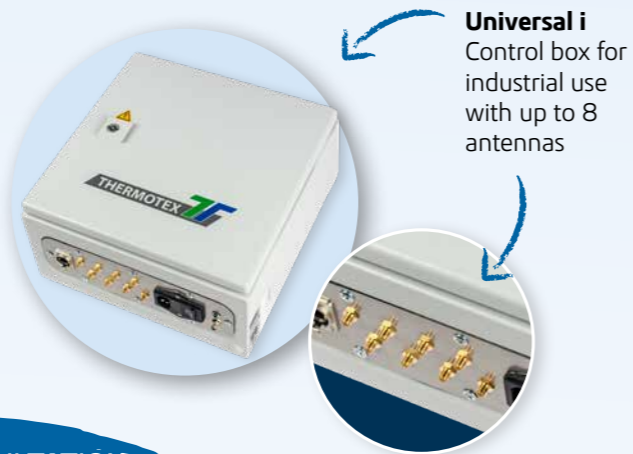


REGISTER OF WHOLE ROOMS

Stationary registering of chipped textiles and items is yesterday's news. Use our long-range universal UHF system to identify entire spaces. Depending on the application, in industrial use for example, up to 8 antennas can be connected to the control cabinet.

| | |
|-----------------------------|--|
| Areas of application | flexible deployable in the laundry process |
| Reading | single, pile, bulk reading |
| Tag | all UHF tags |
| Antenna dim. (LxWxH) | 130 x 130 x 39mm |
| Interfaces | Ethernet, USB, RS232 |

- up to 4 antennas can be connected in the standard system
- offers the possibility of room detection
- special industry solution: 4 - 8 external SAT antennas (depending on application) with the Universal i switch cabinet
- standard system consisting of:
 - UHF long-range decoder
 - 1 - 4 external SAT antennas (depending on application)
- industrial system consisting of:
 - UHF long-range decoder integrated in control box
 - 4 - 8 external SAT antennas (depending on application)



MAKE A CONSULTATION APPOINTMENT NOW!
 info@thermo-tex.de
 Tel.: +49 781 9616-0

UHF system long-range universal 1 - 4

| | |
|--------------------|----------------|
| Universal 1 | Art. no. 18546 |
| Universal 2 | Art. no. 21168 |
| Universal 3 | Art. no. 21169 |
| Universal 4 | Art. no. 21170 |

UHF system long-range universal i 4 - 8

| | |
|----------------------|----------------|
| Universal i 4 | Art. no. 22312 |
| Universal i 5 | Art. no. 22308 |
| Universal i 6 | Art. no. 22309 |
| Universal i 7 | Art. no. 22311 |
| Universal i 8 | Art. no. 22310 |

UHF SYSTEM SHORT RANGE COMPACT TABLE WORK STATION FOR LAUNDRY SORTING IN OUT-GOING AREA



| | |
|-----------------------------|--|
| Application | table work station in laundries, hospitals and nursing homes |
| Reading | single and conditional pile reading |
| Tag use | all UHF tags |
| Antenna dim. (LxWxH) | 376 x 276 x 26,8mm |
| Interfaces | USB HID |

- consists of:
 - Shielded UHF pad antenna
 - USB cable
 - power adapter

UHF system short range compact Art. no. 23049

RFID PICKING TROLLEY FOR HF AND UHF THE MOBILE AND STATIONARY SOLUTION

| | |
|---------------------|---|
| Application | within different steps of the process, mobile or stationary |
| Dim. (LxWxH) | 600 x 600 x 1,400mm |
| Interfaces | USB HID, USB Virtuell-Com, RS232, Ethernet |

The pictured system includes:

- Loop antenna
- industrial decoder
- socket strip; fourfold
- PC support
- 2 fixed and 2 steering wheels with brake, Ø125mm rubberized

RFID UHF picking trolley Art. no. 20488

UHF-SYSTEM LONG-RANGE PANEL FOR SORTING SYSTEMS



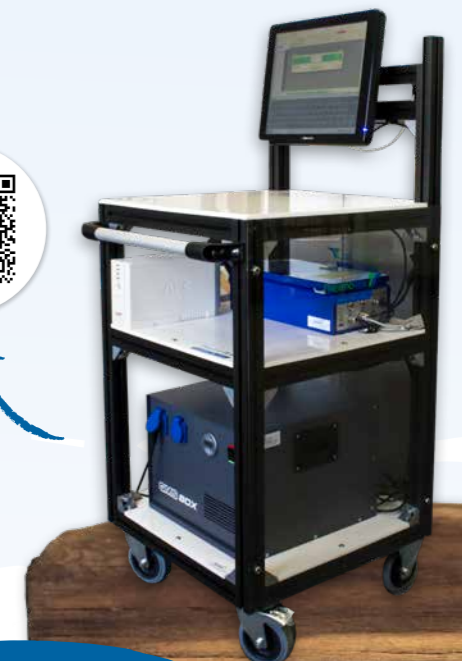
Registration of hanging products

| | |
|-----------------------------|---|
| Application | for reading of hanging items in a conveyor system |
| Reading | single and bulk reading |
| Tag use | all UHF tags |
| Antenna dim. (LxWxH) | 1,120 x 8 x 600mm |
| Interfaces | Ethernet, USB, RS232 |

- consists of:
 - UHF long range reader
 - UHF panel antenna
 - flexible holder

UHF system long-range panel Art. no. 22776

MORE INFO



MORE INFORMATION ON PAGE 11

UHF READING SYSTEMS

UHF SYSTEM SHELF THE FLEXIBLE SOLUTION

With our shelf antenna, no need remains unfulfilled. Whether in the standard system or as a special construction: you will be satisfied!

| | |
|-----------------------------|--|
| Application | table workstation in the laundry process |
| Reading | single, pile |
| Tag | all UHF tags |
| Antenna dim. (LxWxH) | 400 x 400 x 30mm |
| Interfaces | USB, optional: Ethernet, RS232 |

UHF system Shelf Art. no. 22276

ARRANGE A CONSULTANCY
APPOINTMENT STRAIGHT AWAY:
TEL.: +49781 9616-0



UHF SYSTEM FIX SHELF

| | |
|-----------------------------|--|
| Application | flexibly deployable in the laundry process |
| Reading | single, pile |
| Tag | all UHF tags |
| Antenna dim. (LxWxH) | 340 x 330 x 20mm |
| Interfaces | USB, optional: Ethernet, RS232 |

UHF system Fix Shelf Art. no. 21689

UHF CUSTOM-BUILTS

UHF ASCENDING CONVEYOR FOR EXAMPLE

The ascending conveyor is a transportation belt for conduction to a loading system with simultaneous logging of laundry items. The laundry item incl. tag is read by the antenna separately when passing through and transferred to the next processing station

optional:
Light sensor barrier
for automatic start
of the conveyor belt



UHF ASCENDING CONVEYOR
WITH FIX SHELF ANTENNA

UHF GATE

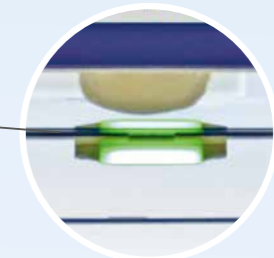
UHF GATE SUITABLE FOR BULK READING

- for bulk logging of various types of laundry in grid trolleys (e.g. mops, bathrobes, door mats, flat textiles, work clothes, contract textiles)

- avoids losses, therefore cost savings
- for logging and tracking grid containers as well as transport equipment
- can also be applied to HF and LF technology



FOR READING BY
PASSING THROUGH



control light for reading status
green = „counting process“ completed

General data

- area of application: container reading in in-coming area (with limitation in out-going area)
- tag: all UHF tags
- reading: bulk reading
- interfaces: Ethernet, USB, RS 232
- fast reading technology with intelligent antenna lighting ensures time-optimised logging
- High container volume thanks to intelligent lighting display
- suitable for europallets

Technical data

- external dim. (W x H x D):
1,500 x 2,260 x 1,900 mm
- inner dim. (W x H x D)
1,033 x 1,986 x 1,800 mm

UHF Gate

Art. no. 21587

UHF BOX

THE MOST ACCURATE SINGLE
CONTAINER SCANNING, 500 ITEMS
IN 10 SECONDS

UHF BOX

The UHF Box is available with one or two pairs of doors. The tagged laundry will be logged efficiently and error-free read. The doors lock during the reading process. They can be opened again, as soon as all textiles have been logged.

Are you a fan of easy solutions for optimal work processes? Then the UHF Box variant with self-opening and closing doors is perfect.

UHF BOX VARIANTS

UHF Box

suitable for grid containers

- external dim. (WxDxH):
1,500 x 1,000 x 2,260 mm
- inner dim. (WxDxH):
1,033 x 900 x 1,986 mm



UHF Box with one door pair Art. no. 21595
UHF Box with two door pairs Art. no. 21832

UHF Box L

suitable for euro-pallets

- external dim. (WxDxH):
1,500 x 1,500 x 2,260 mm
- inner dim. (WxDxH):
1,033 x 1,400 x 1,986 mm



UHF Box with one door pair Art. no. 21000
UHF Box with two door pairs Art. no. 21822

UHF Box XL

suitable for euro-pallets incl. pallet truck

- external dim. (WxDxH):
1,500 x 1,900 x 2,260 mm
- inner dim. (WxDxH):
1,033 x 1,800 x 1,986 mm



UHF Box with one door pair Art. no. 21833
UHF Box with two door pairs Art. no. 21834

General data

- areas of application: logging of textiles on grid containers in incoming / outgoing areas
- tag: F10, F11, F20 F21
- reading: bulk reading
- fast decoder control technology with intelligent antenna illumination allows time-optimised detection
- interfaces: Ethernet, USB, RS 232
- optional:**
with automatic door drive
with glass insert



With touch display and emergency off



With coloured light signal



With door handle inside of the lock



UHF LOCK

- UHF lock for targeted control of the flow of goods
- field of application: detection of textiles in incoming / outgoing areas in lock operation

UHF lock

Size L

- external dim. (WxDxH): 1,500 x 1,620 x 2,260 mm
- inner dim. (WxDxH): 1,033 x 1,400 x 1,986 mm

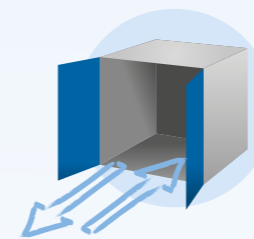
Art. no. 23030

Size L+

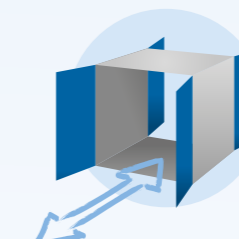
- external dim. (WxDxH): 1,500 x 1,620 x 2,360 mm
- inner dim. (WxDxH): 1,033 x 1,400 x 2,086 mm

Art. no. 22764

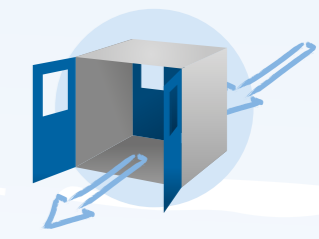
Height-adjustable on request



UHF Box with one door pair
for placing at a wall
The UHF-Box can be operated from one side



UHF Box with two door pairs
to roll through for a better workflow
The UHF-Box can be operated from both sides



UHF Personnel lock
for the collection of Employee clothing
The UHF-Box must be operated from both sides

UHF READING SYSTEMS

UHF / HF HAND-HELD READING SYSTEM TYPE 102



- areas of application: intermediate checks and verification of single elements
- reading: single
- tag use: all UHF tags
- interfaces: USB HID

TYP 102

Art. no. 18862

BLUETOOTH TSL 1128



- areas of application: mobile reading, intermediate checks and verification, inventory
- reading: single, piles
- tag use: all UHF tags
- dimensions (L x W x H): 77 x 169 x 160 mm
- weight: 380g
- interfaces: Bluetooth, Bluetooth HID
- in battery mode

Bluetooth TSL 1128

Art. no. 20757

BLUETOOTH TSL 2128P



- areas of application: mobile reading, intermediate checks and verification, inventory
- reading: single, piles
- reading distance: UHF: up to 9m | Barcode: up to 90cm
- tag use: F10, F11, F12
optional: 2D barcode reading
- dimensions (W x H x T): 98 x 170 x 158 mm
- weight: 445g
- interfaces: Bluetooth virtuell COM, Bluetooth HID
- in battery mode

Bluetooth TSL 2128P
2D-Bluetooth TSL 2128P

Art. no. 23061
Art. no. 23058

THERMOTAG



MORE INFO



THE IN-HOUSE
DEVELOPED APP

The app for quick and simple data entry. Connect your smartphone to your UHF handheld reader and you're ready to go. The following functions are available to you with the Pro version:

- Alientag checker
- Tag reader
- UHF tagfinder
- Barcode reader

THERMOTAG

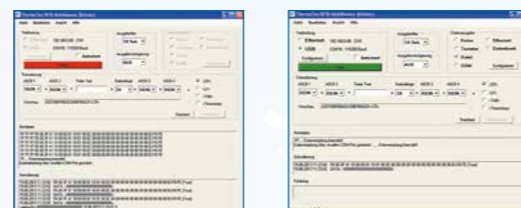
Art. no. 23112

RFID MIDDLEWARE


- flexible interface for your RFID reading systems
- simple conversion of the data from RFID reading systems

Middleware

Art. no. 19490



ARRANGE A CONSULTANCY
APPOINTMENT STRAIGHT AWAY:
E-mail: info@thermo-tex.de
Phone: +49 781 9616-0

A child wearing a brown aviator helmet and goggles is sitting inside a cardboard box. A large, light blue scarf is attached to the back of the box and is blowing in the wind, making it look like the child is flying. The box is decorated with several travel-themed stickers, including 'MOSCOW', 'MOSKVA', 'NEW YORK', 'HONG KONG', 'LONDON', and 'JAPAN'. The child is looking out over a vast, scenic landscape of rolling green hills and mountains under a blue sky with wispy clouds. The box is placed on a wooden deck.

**We're looking forward
to your call!**

THERMOTEX NAGEL GmbH

Phone +49 781 9616-0
Fax +49 781 9616-50
Schutterstraße 14
77746 Schutterwald / D
www.thermo-tex.co.uk
facebook.com/thermotexnagel

THERMOTEX EUROPE AG

Phone +41 61 7519-100
Fax +41 61 7519-101
Langenhagstraße 13
4147 Aesch / CH
www.thermo-tex.ch